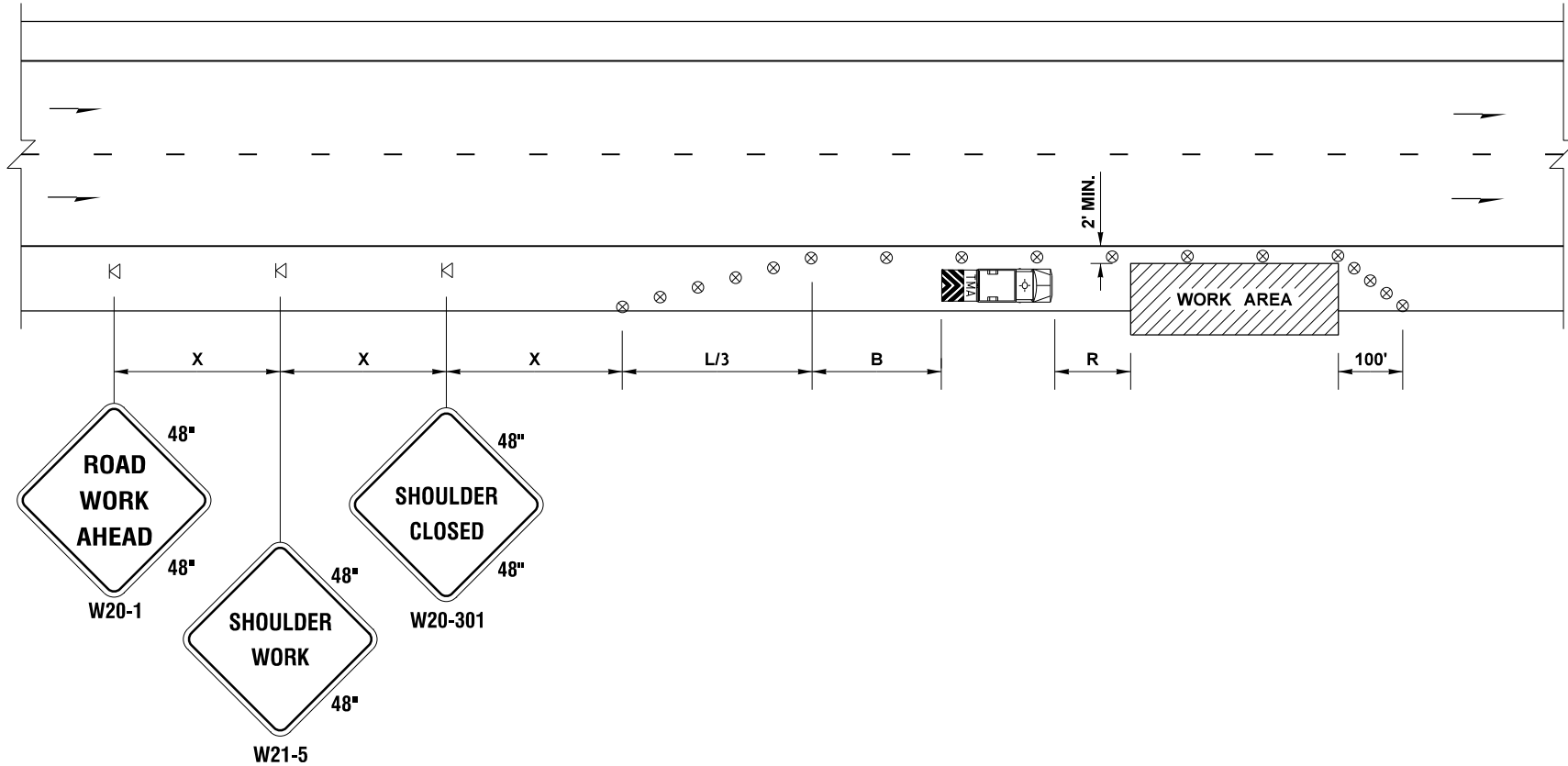


SIGN SPACING = X (1)		
FREEWAYS & EXPRESSWAYS	55 / 70 MPH	1500'±
RURAL HIGHWAYS	60 / 65 MPH	800'±
RURAL ROADS	45 / 55 MPH	500'±
(1) ALL SPACING MAY BE ADJUSTED TO ACCOMMODATE INTERCHANGE RAMPs, AT-GRADE INTERSECTIONS AND DRIVEWAYS.		

MINIMUM SHOULDER TAPER LENGTH = L/3 (feet)										
SHOULDER WIDTH (feet)	Posted Speed (mph)									
	25	30	35	40	45	50	55	60	65	70
8'	-	-	-	-	120	130	150	160	170	190
10'	-	-	-	-	150	170	190	200	220	240
USE A MINIMUM 3 DEVICES TAPER FOR SHOULDER LESS THEN 8'.										

CHANNELIZATION DEVICE SPACING (feet)		
MPH	TAPER	TANGENT
50/70	40	80
35/45	30	60

BUFFER DATA										
LONGITUDINAL BUFFER SPACE = B										
SPEED (MPH)	25	30	35	40	45	50	55	60	65	70
LENGTH (feet)	-	-	-	-	360	425	495	570	645	730
BUFFER VEHICLE ROLL AHEAD DISTANCE = R										
TRANSPORTABLE ATTENUATOR								30 FEET MIN. TO 100 FEET MAX.		
MINIMUM HOST VEHICLE WEIGHT 15,000 LBS. THE MAXIMUM										
WEIGHT SHALL BE IN ACCORDANCE WITH THE MANUFACTURERS RECOMMENDATION.										



LEGEND

TEMPORARY SIGN LOCATION

TRAFFIC SAFETY DRUM

TRANSPORTABLE ATTENUATOR

SHOULDER CLOSURE - HIGH SPEED

NOT TO SCALE

- NOTES:
1. NO ENCROACHMENT IN TRAVELED LANE. IF ENCROACHMENT IS NECESSARY, LANE SHALL BE CLOSED.

2. DEVICE SPACING FOR THE DOWNSTREAM TAPER SHALL BE 20' (FT) O.C.

3. ALL SIGNS ARE BLACK ON ORANGE.

FILE NAME				S:\Deslgn R P& S\4-Standards\2-Plan Sheet Library\01-Publlshed PSL(TC) Work Zone Traffic Control\W(TC-6) Shoulder Closure - Hlgh Speed\TC-6.dgn								Plot 1			
TIME		1:21:04 PM						REGION NO.		STATE		FED.AID PROJ.NO.		PLAN REF NO	
DATE		9/18/2014								WASH				TC6	
PLOTTED BY		FletcCo												SHEET	
DESIGNED BY														OF	
ENTERED BY														SHEETS	
CHECKED BY															
PROJ. ENGR.															
REGIONAL ADM.				REVISION		DATE		BY						TRAFFIC CONTROL PLAN	