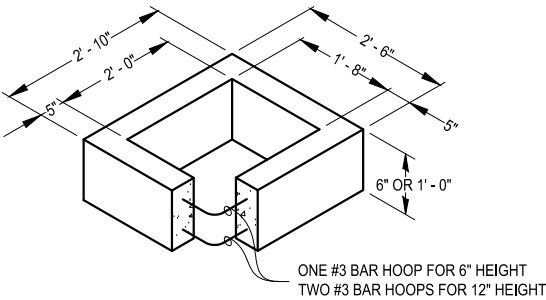


CREATION: 3/24/2025, REVISED: 3/24/2025 BY: JIMORSE

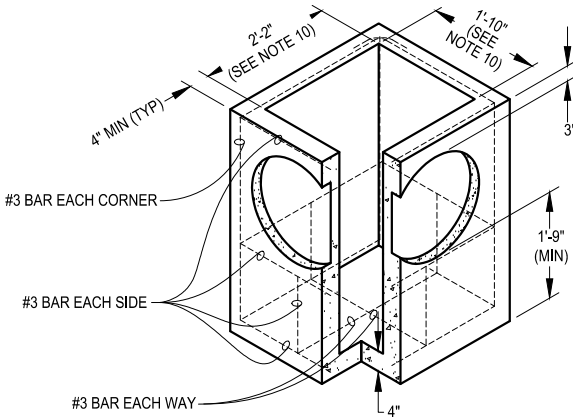
PIPE ALLOWANCES	
PIPE DIAMETER	MAXIMUM INSIDE DIAMETER
REINFORCED OR PLAIN CONCRETE PIPE	12"
ALL METAL PIPE	15"
CPSSP* (STD. SPEC. 9-05.20)	12"
SOLID WALL PVC (STD. SPEC. 9-05.12(1))	15"
PROFILE WALL PVC (STD. SPEC. 9-05.12(2))	15"
* CORRUGATED POLYETHYLENE STORM SEWER PIPE	

GENERAL NOTES:

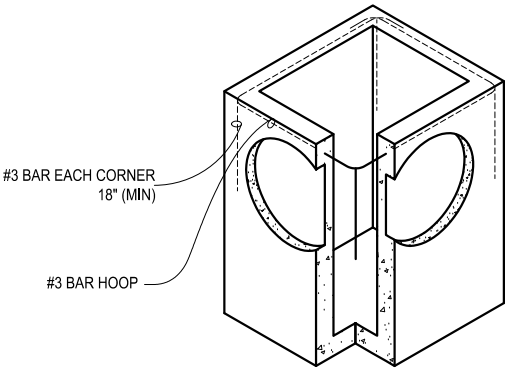
1. CONCRETE CATCH BASIN SHALL BE CONSTRUCTED IN ACCORDANCE WITH ASTM C-478 (AASHTO M-199) AND ASTM C-890 UNLESS OTHERWISE SHOWN ON PLANS OR NOTED IN THE PROJECT SPECIAL PROVISIONS.
2. AS AN ACCEPTABLE ALTERNATIVES TO THE REBAR SHOWN IN THE PRECAST BASE SECTION, FIBERS (PLACED ACCORDING TO THE STANDARD SPECIFICATIONS), OR WIRE MESH HAVING A MINIMUM AREA OF 0.12 SQUARE INCHES PER FOOT SHALL BE USED IN ADDITION TO THE MINIMUM REQUIRED REBAR SHOWN IN THE ALTERNATE PRECAST BASE SECTION. WIRE MESH SHALL NOT BE PLACED IN THE KNOCKOUTS.
3. THE KNOCKOUT DIAMETER SHALL NOT BE GREATER THAN 1'-8". KNOCKOUTS SHALL HAVE A WALL THICKNESS OF 2" MINIMUM TO 2.5" MAXIMUM. PROVIDE A 1.5" MINIMUM GAP BETWEEN THE KNOCKOUT WALL AND THE OUTSIDE OF THE PIPE.
4. WHEN PVC PIPE IS USED, A SAND COLLAR SHALL BE INSTALLED.
5. AFTER THE PIPE IS INSTALLED, FILL THE GAP WITH NON-SHRINK GROUT IN ACCORDANCE WITH STANDARD SPECIFICATION 9-20.3.
6. CATCH BASIN/INLET SHALL BE SET ON A COMPACTED OR UNDISTURBED LEVEL FOUNDATION.
7. THE MAXIMUM DEPTH FROM THE FINISHED GRADE TO THE LOWEST PIPE INVERT SHALL BE 5'.
8. THE FRAME AND GRATE MAY BE INSTALLED WITH THE FLANGE UP OR DOWN. THE FRAME MAY BE CAST INTO THE ADJUSTMENT SECTION.
9. THE PRECAST BASE SECTION MAY HAVE A ROUNDED FLOOR, AND THE WALLS MAY BE SLOPED AT A RATE OF 1:24 OR STEEPER.
10. THE OPENING SHALL BE MEASURED AT THE TOP OF THE PRECAST BASE SECTION.
11. ALL PICKUP HOLES SHALL BE FULLY GROUTED CLOSED AFTER THE BASIN HAS BEEN PLACED.



RECTANGULAR ADJUSTMENT
SEE STANDARD PLAN S-105



PRECAST BASE SECTION



ALTERNATIVE PRECAST BASE SECTION
(SEE NOTE 2)



APPROVED BY:

Robert B. Blegen

ROBERT B. BLEGEN, P.E.
PUBLIC WORKS DIRECTOR

CATCH BASIN TYPE 1

STANDARD PLAN NO.
S-112

PUBLICATION DATE: 03/2025

REVISION NO.: 01