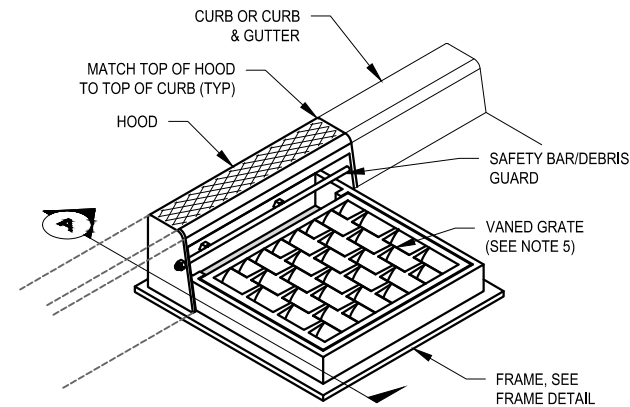


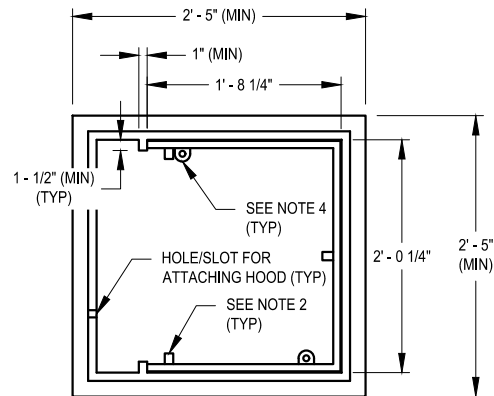
SECTION A
FRAME, HOOD, AND
VANED GRATE

GENERAL NOTES:

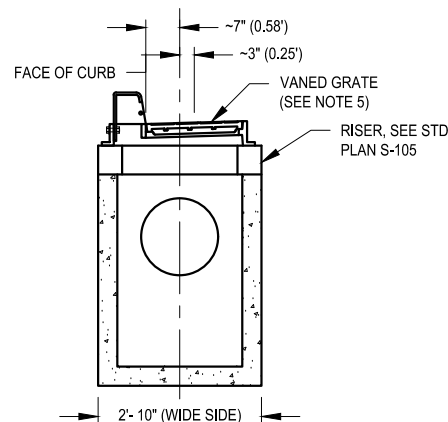
1. THE ASYMMETRY OF THE COMBINATION INLET SHALL BE CONSIDERED WHEN CALCULATING THE OFFSET DISTANCE FOR THE CATCH BASIN.
2. THE DIMENSIONS OF THE FRAME AND HOOD MAY VARY SLIGHTLY AMONG DIFFERENT MANUFACTURERS. THE FRAME MAY HAVE CAST FEATURES INTENDED TO SUPPORT A GRATE GUARD. HOOD UNITS SHALL MOUNT INSIDE OF THE FRAME. THE METHODS FOR FASTENING THE SAFETY BAR/DEBRIS GUARD ROD TO THE HOOD MAY VARY. THE HOOD MAY INCLUDE CASTING LUGS. THE TOP OF THE HOOD MAY BE CAST WITH A PATTERN.
3. ATTACH THE HOOD TO THE FRAME WITH TWO 3/4" X 2" HEX HEAD BOLTS, NUTS, AND OVERSIZE WASHERS. THE WASHERS SHALL HAVE DIAMETERS ADEQUATE TO ASSURE FULL BEARING ACROSS THE SLOTS.
4. WHEN BOLT-DOWN GRATES ARE SPECIFIED IN THE CONTRACT, PROVIDE TWO HOLES IN THE FRAME THAT ARE VERTICALLY ALIGNED WITH THE GRATE SLOTS. TAP EACH HOLE TO ACCEPT A 5/8" X 11 NC X 2" ALLEN HEAD CAP SCREW. LOCATION OF BOLT-DOWN HOLES VARIES AMONG DIFFERENT MANUFACTURERS.
5. ONLY DUCTILE IRON VANED GRATES SHALL BE USED. SEE STANDARD PLANS S-121 AND S-122.
6. THIS PLAN INCLUDES INSTALLATION DETAILS ONLY. FOR FABRICATION DETAILS SEE APPROPRIATE WSDOT STANDARD PLANS AND SPECIFICATIONS.
7. THE TOP OF GRATE SHALL BE INSTALLED 1/2" LOWER THAN THE PROJECTED GUTTER GRADE.



ISOMETRIC VIEW
FRAME, HOOD, AND VANED
GRATE



FRAME DETAIL



SECTION A
CATCH BASIN, TYPE 1
(SEE NOTE 1)



APPROVED BY:

Robert B. Blegen

ROBERT B. BLEGEN, P.E.
PUBLIC WORKS DIRECTOR

COMBINATION INLET

STANDARD PLAN NO.
S-115

PUBLICATION DATE: 03/2025

REVISION NO.: 01