

MINIMUM LANE CLOSURE TAPER LENGTH = L (feet)										
LANE WIDTH (feet)	Posted Speed (mph)									
	25	30	35	40	45	50	55	60	65	70
10	105	150	205	270	450	500	550	-	-	-
11	115	165	225	295	495	550	605	660	-	-
12	125	180	245	320	540	600	660	720	780	840

MINIMUM SHOULDER TAPER LENGTH = L/3 (feet)										
SHOULDER WIDTH (feet)	Posted Speed (mph)									
	25	30	35	40	45	50	55	60	65	70
8'	40	40	60	90	120	130	150	160	170	190
10'	40	60	90	90	150	170	190	200	220	240

USE A MINIMUM 3 DEVICES TAPER FOR SHOULDER LESS THEN 8'.

SIGN SPACING = X (1)		
FREEWAYS & EXPRESSWAYS	55 / 70 MPH	1500' ±
RURAL HIGHWAYS	60 / 65 MPH	800' ±
RURAL ROADS	45 / 55 MPH	500' ±
RURAL ROADS & URBAN ARTERIALS	35 / 40 MPH	350' ±
RURAL ROADS & URBAN ARTERIALS RESIDENTIAL & BUSINESS DISTRICTS	25 / 30 MPH	200' ± (2)
URBAN STREETS	25 MPH OR LESS	100' ± (2)

(1) ALL SPACING MAY BE ADJUSTED TO ACCOMMODATE INTERCHANGE RAMP, AT-GRADE INTERSECTIONS AND DRIVEWAYS.  
(2) THIS SPACING MAY BE REDUCED IN URBAN AREAS TO FIT ROADWAY CONDITIONS.

CHANNELIZATION DEVICE SPACING (feet)		
MPH	TAPER	TANGENT
50/70	40	80
35/45	30	60
25/30	20	40

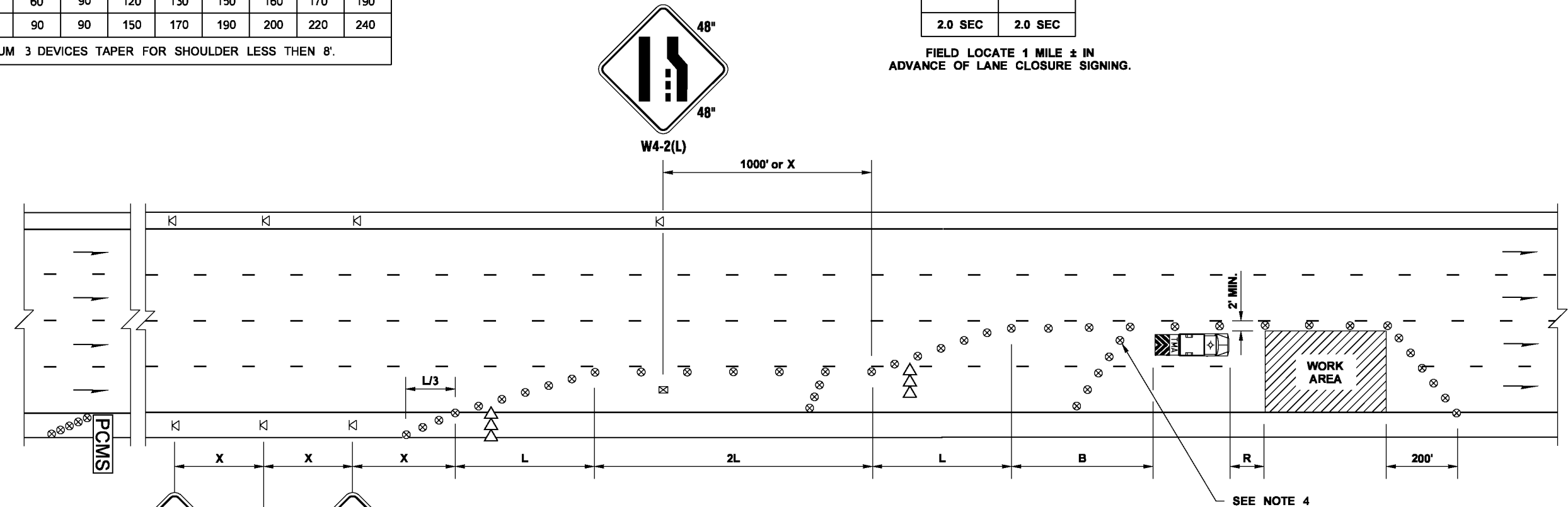
PCMS	
1	2
2 LANES CLOSED AHEAD	WATCH FOR SLOW TRAFFIC
2.0 SEC	2.0 SEC

FIELD LOCATE 1 MILE ± IN ADVANCE OF LANE CLOSURE SIGNING.

BUFFER DATA										
LONGITUDINAL BUFFER SPACE = B										
SPEED (MPH)	25	30	35	40	45	50	55	60	65	70
LENGTH (feet)	155	200	250	305	360	425	495	570	645	730

BUFFER VEHICLE ROLL AHEAD DISTANCE = R

TRANSPORTABLE ATTENUATOR	30 FEET MIN. TO 100 FEET MAX.
MINIMUM HOST VEHICLE WEIGHT 15,000 LBS. THE MAXIMUM WEIGHT SHALL BE IN ACCORDANCE WITH THE MANUFACTURERS RECOMMENDATION.	



LEGEND

- ⊗ TRAFFIC SAFETY DRUM
- ⊠ TEMPORARY SIGN LOCATION
- ➡ SEQUENTIAL ARROW SIGN
- 🚚 TRANSPORTABLE ATTENUATOR
- PCMS PORTABLE CHANGEABLE MESSAGE SIGN
- ⊠ TEMPORARY SIGN LOCATION (5' (FT) MOUNTING HEIGHT)

DOUBLE-LANE CLOSURE FOR MULTI-LANE ROADWAYS

NOT TO SCALE

- NOTES:
- SEE SPECIAL PROVISIONS FOR WORK HOUR RESTRICTIONS.
  - EXTEND DEVICE TAPER AT L/3 ACROSS SHOULDER.
  - DEVICES SHALL NOT ENCROACH INTO THE ADJACENT LANES.
  - USE TRANSVERSE DEVICES IN CLOSED LANE EVERY 1000' (FT) (RECOMMENDED).
  - DEVICE SPACING FOR THE DOWNSTREAM TAPER SHALL BE 20' (FT).
  - ALL SIGNS ARE BLACK ON ORANGE.

FILE NAME	S:\Design R P& S4-Standards\2-Plan Sheet Library\01-Published PSL\TC) Work Zone Traffic Control\TC-4) Double-Lan Closure for Multi-Lane Roadways\TC-4.dgn	REGION NO.	STATE	FED.AID PROJ.NO.	DATE	DATE	Washington State Department of Transportation	Plot 1
TIME	3:28:32 PM		WASH					PLAN REF NO TC4
DATE	1/15/2015							SHEET
PLOTTED BY	berensb							OF
DESIGNED BY								SHEETS
ENTERED BY								
CHECKED BY								
PROJ. ENGR.								
REGIONAL ADM.		REVISION	DATE	BY				