

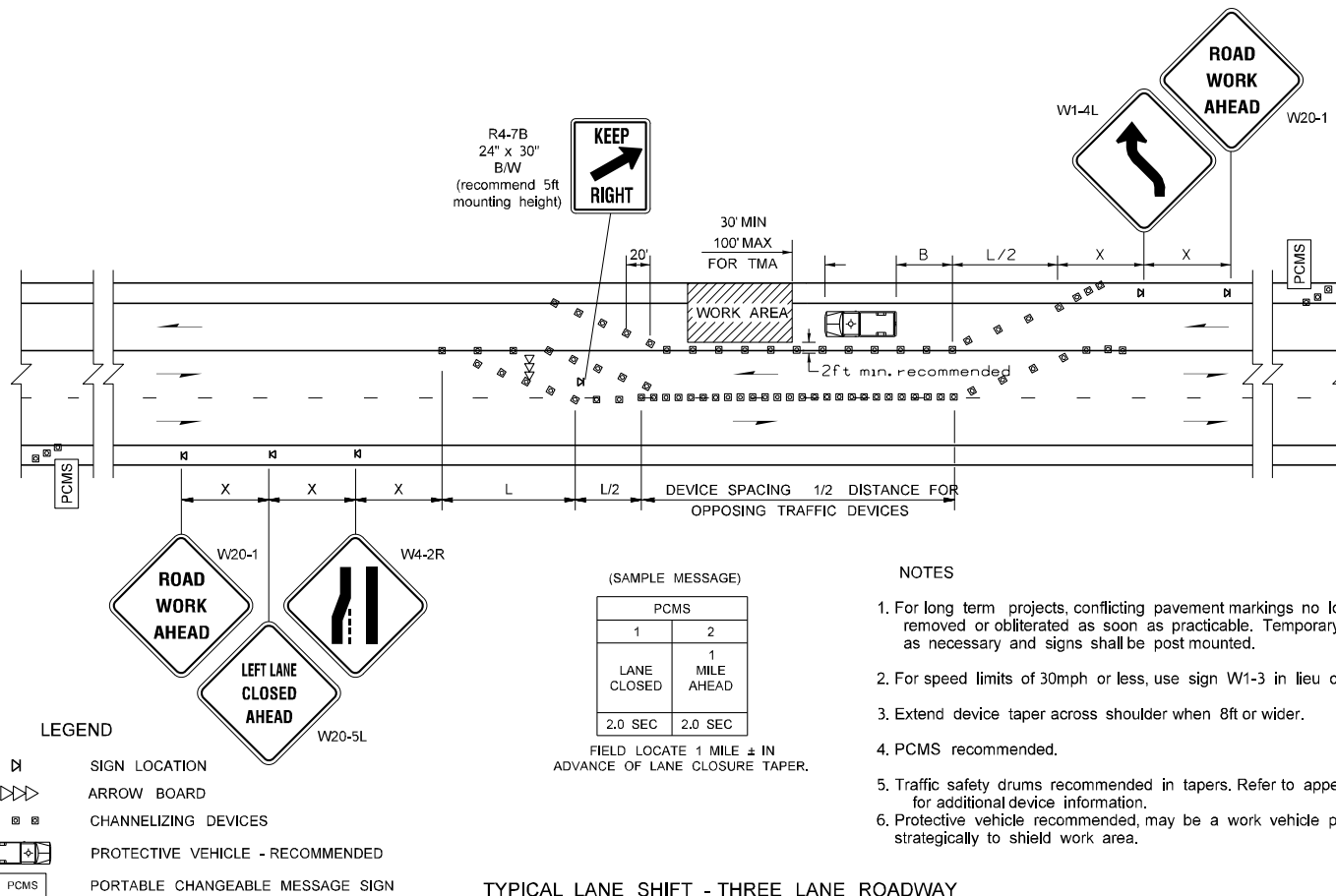
BUFFER DATA											
LONGITUDINAL BUFFER SPACE = B											
SPEED (MPH)	25	30	35	40	45	50	55	60	65	70	
LENGTH (feet)	155	200	250	305	360	425	495	570	-	-	

CHANNELIZING DEVICE SPACING (FEET)		
MPH	TAPER	TANGENT
50 / 60	40	80
35 / 45	30	60
25 / 30	20	40

MINIMUM TAPER LENGTH = L (feet)											
Lane Width (feet)	Posted Speed (mph)										
	25	30	35	40	45	50	55	60	65	70	
10	105	150	205	270	450	500	550	-	-	-	
11	115	165	225	295	495	550	605	660	-	-	
12	125	180	245	320	540	600	660	720	-	-	

SIGN SPACING = X (FEET) ( 1 )		
RURAL HIGHWAYS	60/65 MPH	800'±
RURAL ROADS	45/55 MPH	500'±
RURAL ROADS & URBAN ARTERIALS	35/40 MPH	350'±
RURAL ROADS, URBAN ARTERIALS RESIDENTIAL & BUSINESS DISTRICTS	25/30 MPH	200'± (2)
URBAN STREETS	25 MPH OR LESS	100'± (2)
ALL SIGNS ARE 48" X 48" BLACK ON ORANGE UNLESS OTHERWISE DESIGNATED.		

- (1) All spacing may be adjusted to accommodate interchange ramps, at-grade intersections, and driveways.
- (2) This spacing may be reduced in urban areas to fit roadway conditions.



#### NOTES

- For long term projects, conflicting pavement markings no longer applicable must be removed or obliterated as soon as practicable. Temporary markings shall be used as necessary and signs shall be post mounted.
- For speed limits of 30mph or less, use sign W1-3 in lieu of sign W1-4.
- Extend device taper across shoulder when 8ft or wider.
- PCMS recommended.
- Traffic safety drums recommended in tapers. Refer to appendix 2-2 for additional device information.
- Protective vehicle recommended, may be a work vehicle placed strategically to shield work area.