

SIGHT DISTANCE DATA MINIMUM STOPPING SIGHT DISTANCE = S										
SPEED LIMIT MPH	25	30	35	40	45	50	55	60	65	70
DISTANCE FEET	155	200	250	305	360	425	495	570	645	730

DISTANCES SHOWN ARE MINIMUMS, USE ADDITIONAL DISTANCE WHEN POSSIBLE.

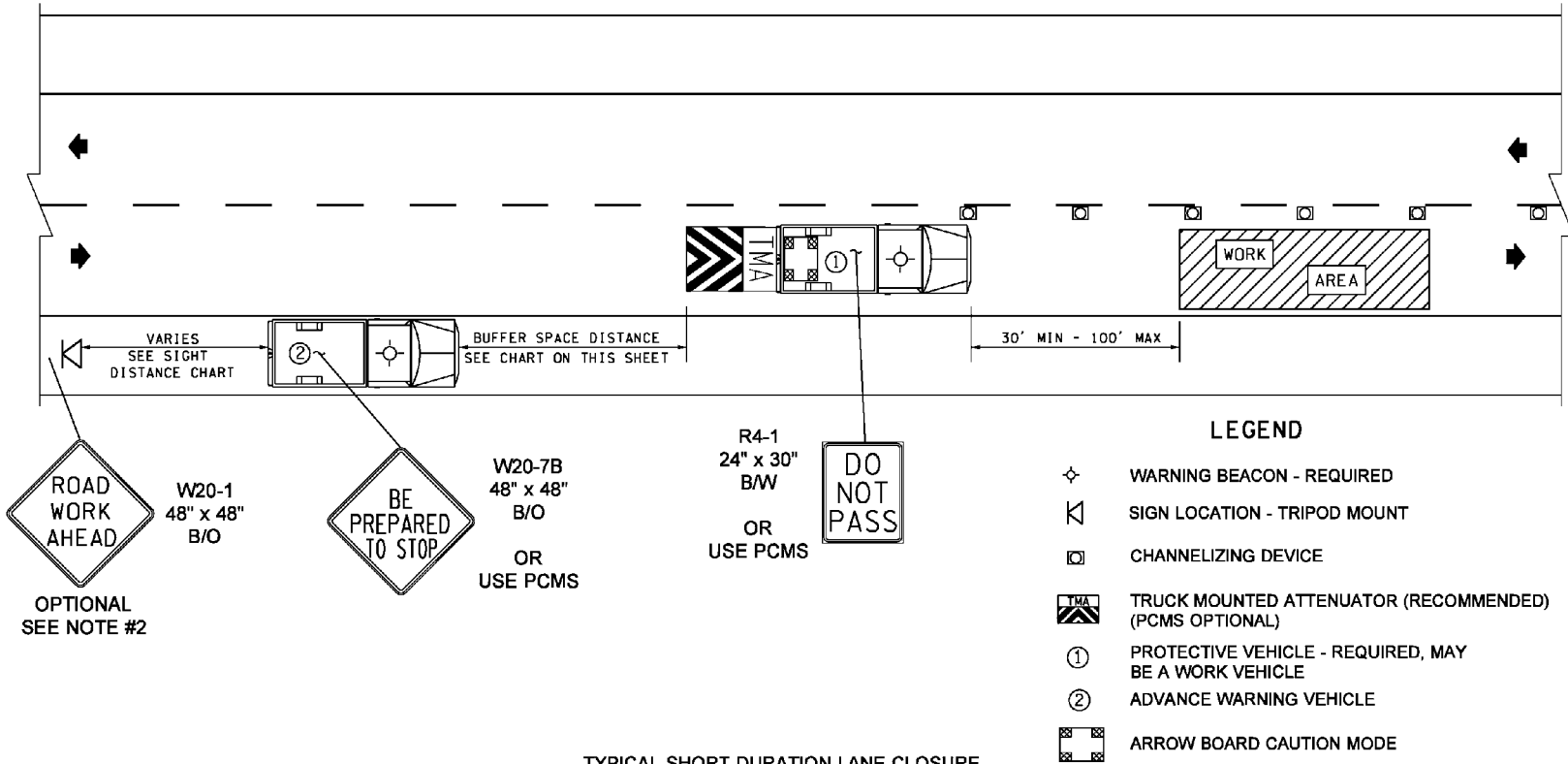
BUFFER DATA										
LONGITUDINAL BUFFER SPACE = B										
SPEED (MPH)	25	30	35	40	45	50	55	60	65	70
LENGTH (feet)	155	200	250	305	360	425	495	570	645	730

WORK ZONE CONDITION (SEE CONDITION GUIDANCE)

- A - ALLOWED, VEHICLE #1 REQUIRED, ALL OTHER DEVICES OPTIONAL.
- B - ALLOWED, VEHICLE #1 AND #2 REQUIRED, CONSIDER USE OF SPOTTER, DEVICES AND LOW VOLUME WORK HOURS.
- C - NOT RECOMMENDED CONSIDER MOBILE OR STATIONARY TCP'S.

NOTES:

1. STOPPING TRAFFIC FOR UP TO 20 MINUTES MAY ALSO BE ALLOWED.
(CONTACT & COORDINATE WITH REGION TRAFFIC OFFICE)
2. IF NO TMA IS AVAILABLE, A WORK VEHICLE MAY STRATEGICALLY LOCATED TO SHIELD WORK AREA.



TYPICAL SHORT DURATION LANE CLOSURE
2 LANE OPERATION
TCP 14

TCP 14 – Typical Short Duration Lane Closure (Two-Lane, Two-Way Highway Application)