

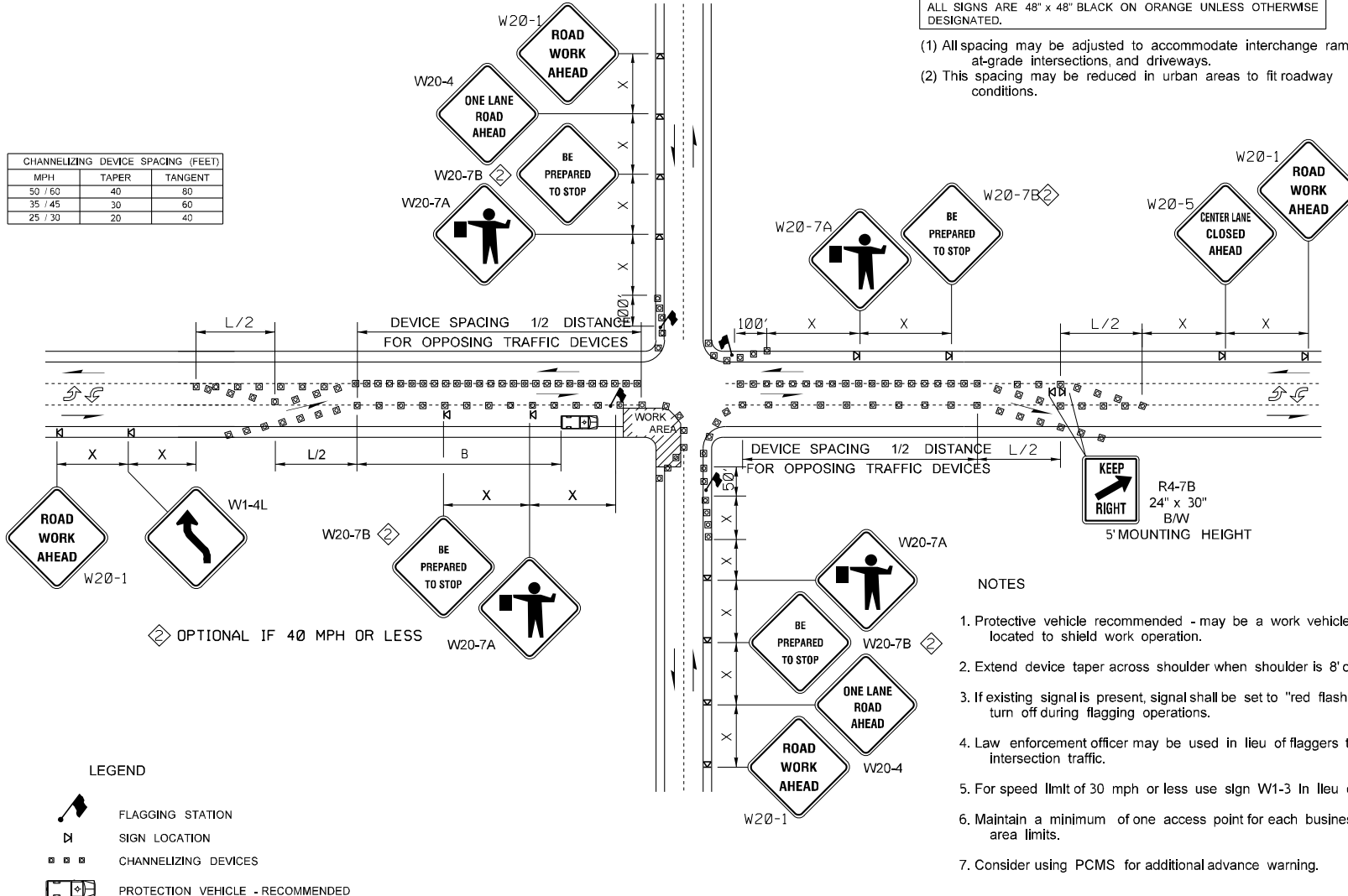
BUFFER DATA										
LONGITUDINAL BUFFER SPACE = B										
SPEED (MPH)	25	30	35	40	45	50	55	60	65	70
LENGTH (feet)	155	200	250	305	360	425	495	570	645	730

CHANNELIZING DEVICE SPACING (FEET)		
MPH	TAPER	TANGENT
50 / 60	40	80
35 / 45	30	60
25 / 30	20	40

MINIMUM TAPER LENGTH = L (feet)										
Lane Width (feet)	25	30	35	40	45	50	55	60	65	70
10	105	150	205	270	450	500	550	-	-	-
11	115	165	225	295	495	550	605	660	-	-
12	125	180	245	320	540	600	660	720	-	-

SIGN SPACING = X (FEET) (1)		
RURAL HIGHWAYS	60 / 65 MPH	800±
RURAL ROADS	45 / 55 MPH	500±
RURAL ROADS & URBAN ARTERIALS	35 / 40 MPH	350±
RURAL ROADS, URBAN ARTERIALS RESIDENTIAL & BUSINESS DISTRICTS	25 / 30 MPH	200± (2)
URBAN STREETS	25 MPH OR LESS	100± (2)

- (1) All spacing may be adjusted to accommodate interchange ramps, at-grade intersections, and driveways.  
(2) This spacing may be reduced in urban areas to fit roadway conditions.



TYPICAL INTERSECTION LANE CLOSURE ~ THREE LANE ROADWAY  
TCP 27