

# Spokane Valley Public Safety Sales Tax Ballot Measure



During the August 5 primary election, voters may have the opportunity to vote on a public safety ballot measure that would raise sales tax by one-tenth of one percent (0.1%).

## WHAT WILL THE NEW REVENUE FUND?

If the ballot passes, the funding will be dedicated to hiring additional police officers and funding public safety in Spokane Valley.

## ONE-TENTH OF ONE PERCENT (0.1%) SALES TAX INCREASE EQUATES TO:



AVERAGE  
YEARLY  
COST

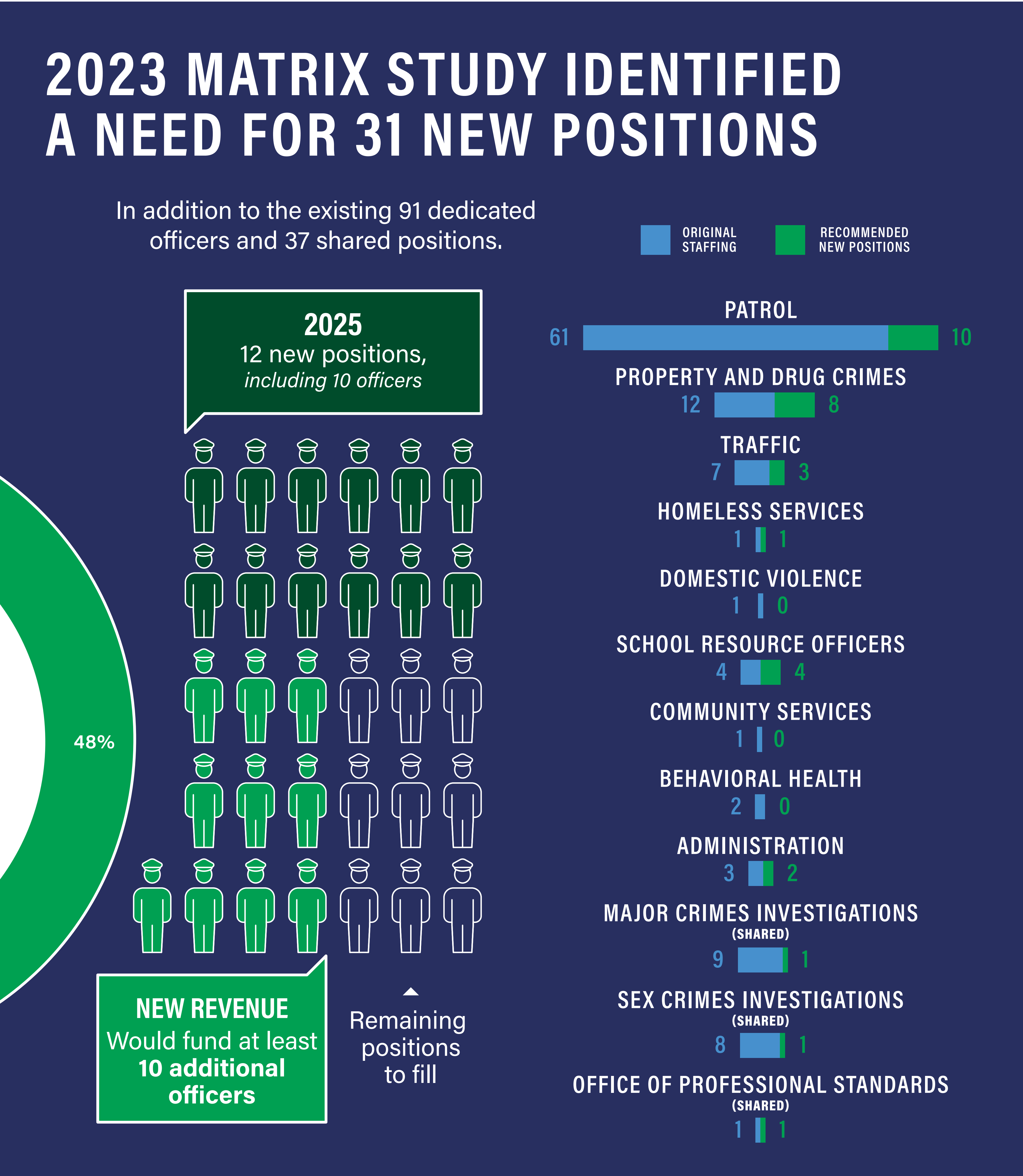
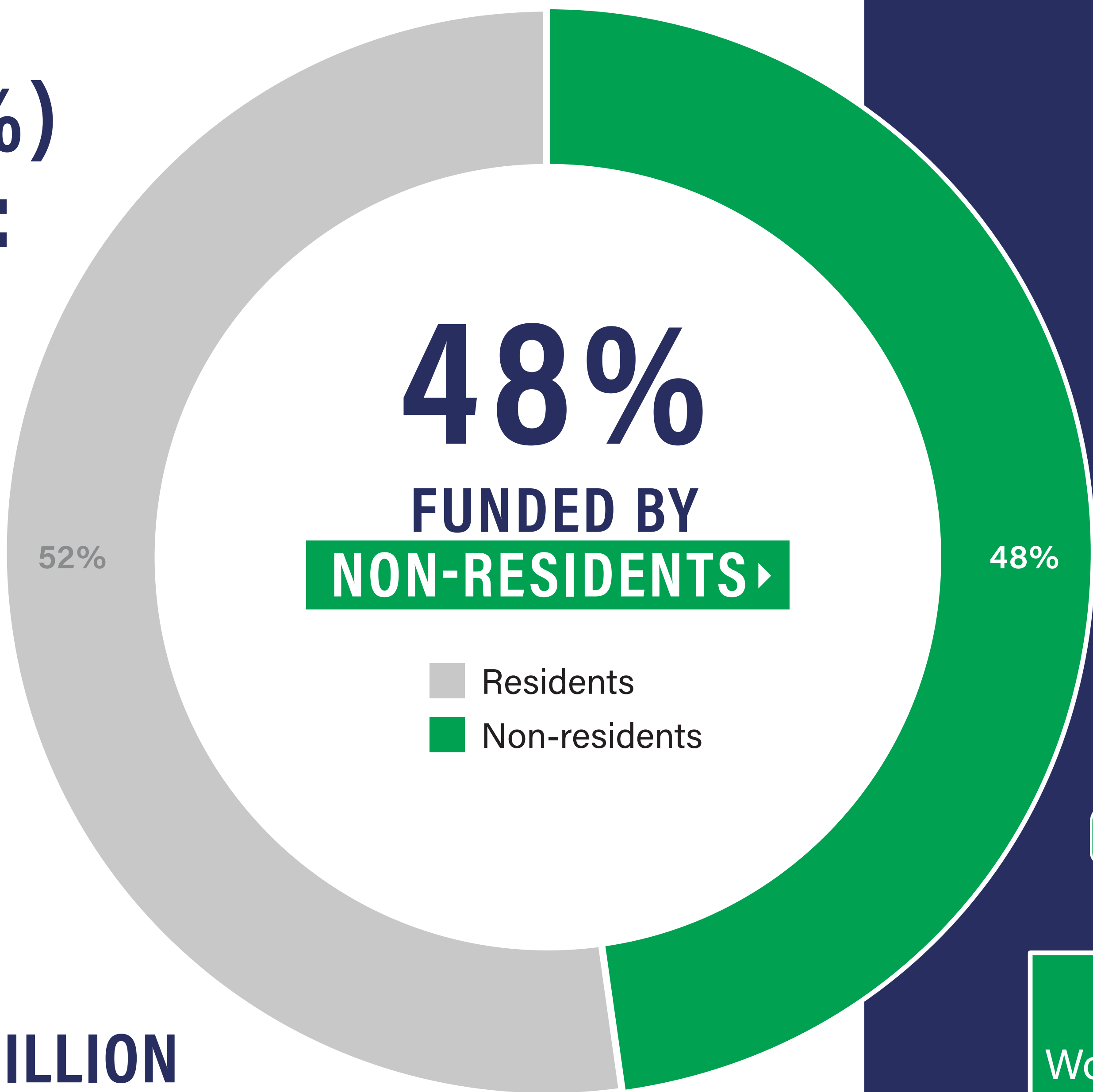
\$12.43 PER SHOPPER

\$28.48 PER HOUSEHOLD

=

\$2.6 MILLION  
ANNUALLY

FOR PUBLIC SAFETY





# Public Safety for a Growing Community

Since incorporation 22 years ago, the City of Spokane Valley's population has outpaced the Spokane Valley Police Department's (SVPD) staffing levels — stretching public safety resources thin. There are many factors overburdening SVPD.

*SVPD RESPONDS TO* **50,000 CALLS ANNUALLY**



HIGHER  
POPULATION



MORE CALLS  
FOR SERVICE



RIISING DRUG  
AND MENTAL  
HEALTH CRISIS



INCREASED COSTS  
TO RECRUIT, HIRE,  
TRAIN AND  
EMPLOY OFFICERS

A photograph showing the back of a crowd of people, mostly seen from behind, suggesting a large gathering or event.

POPULATION  
HAS GROWN

**31%↑**

*SINCE INCORPORATION  
IN 2003*

A photograph of a female police officer in uniform, looking directly at the camera with a serious expression.

PUBLIC SAFETY  
CALLS ARE UP

**54%↑**

*SINCE 2004*

A photograph of a male police officer in uniform, looking towards the left side of the frame.

PROACTIVE POLICING  
CALLS ARE DOWN

**57%↓**

*SINCE 2008*

A photograph of a smartphone screen showing a standard numeric dial pad with letters assigned to each number.

CRITICAL RESPONSE  
TIMES HAVE INCREASED

**28%↑**

*SINCE 2020*



# If Voters APPROVE the POTENTIAL Public Safety Sales Tax Ballot Measure



✓ THE **NEW REVENUE** WILL BE USED TO HIRE AT LEAST **10 MORE OFFICERS** AND **FUND PUBLIC SAFETY EXPENSES**, RESULTING IN:

✗ IF VOTERS **DO NOT APPROVE** THE BALLOT MEASURE, SVPD WILL CONTINUE TO SERVE OUR COMMUNITY WITH THE CURRENT NUMBERS OF OFFICERS, WHICH COULD LEAD TO:



**FASTER EMERGENCY RESPONSE TIMES**



**MORE NEIGHBORHOOD PATROLS**



**ENHANCED DRUG AND PROPERTY CRIME INVESTIGATIVE CAPABILITIES**



**SAFER ROADS**



**BETTER HOMELESS RESPONSE**



**ENHANCED SCHOOL SAFETY FOR OUR CHILDREN**



**BURNOUT AMONG OUR POLICE FORCE**



**SLOWER RESPONSE TIMES**



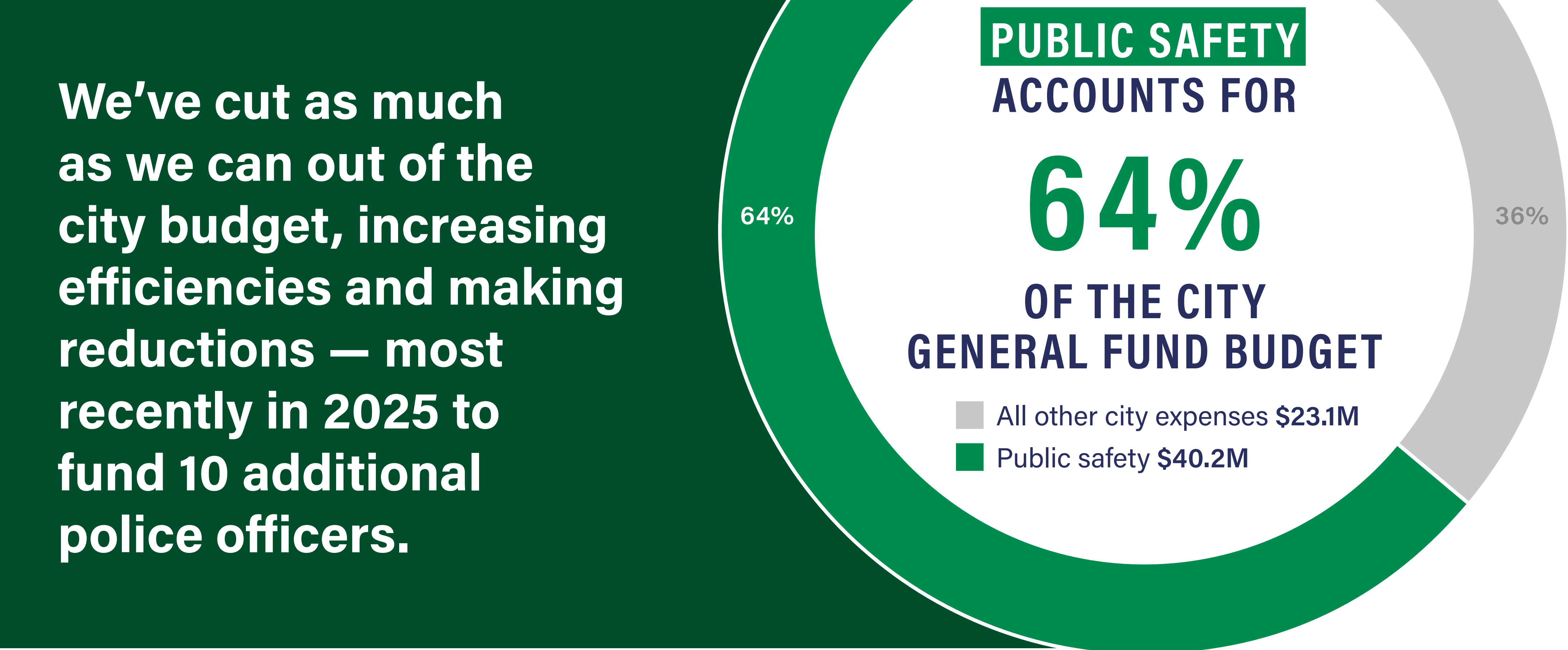
**DECREASED PROACTIVE POLICING**



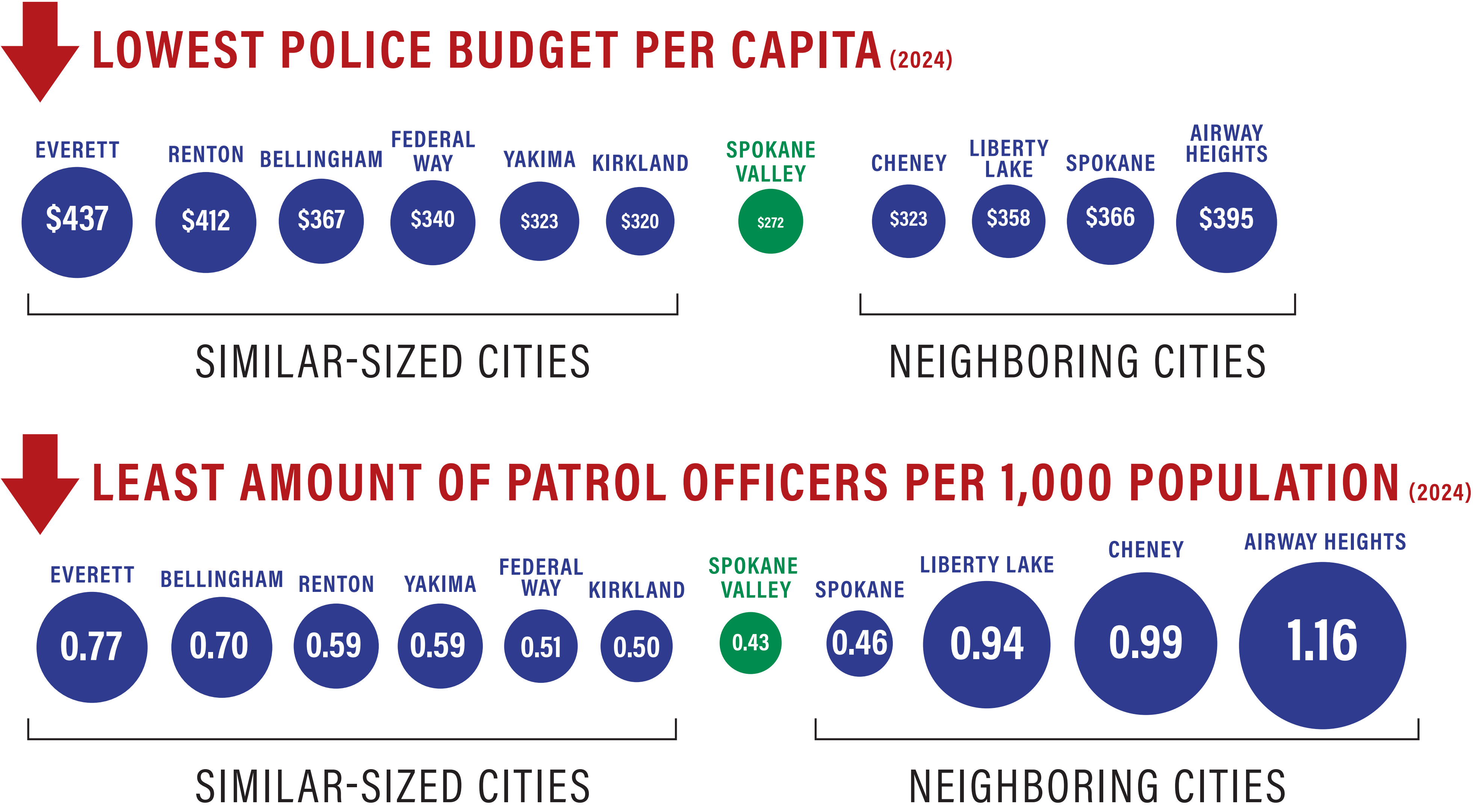
**HEALTH AND SAFETY RISK TO OUR CITIZENS**



# Responsible Financial Stewardship



When compared to similar-sized cities throughout Washington state and neighboring cities, Spokane Valley has the:



## WHERE DOES THE CITY'S GENERAL FUND COME FROM?

The two largest revenue sources are \$14.1M property tax and \$52.2M sales tax, which are collectively estimated to account for 81% of 2025 General Fund recurring revenues.

